

Mildred Kanipe Memorial Park






16513 Elkhead Rd.
Oakland, OR 97462
mildredkanipepark.org

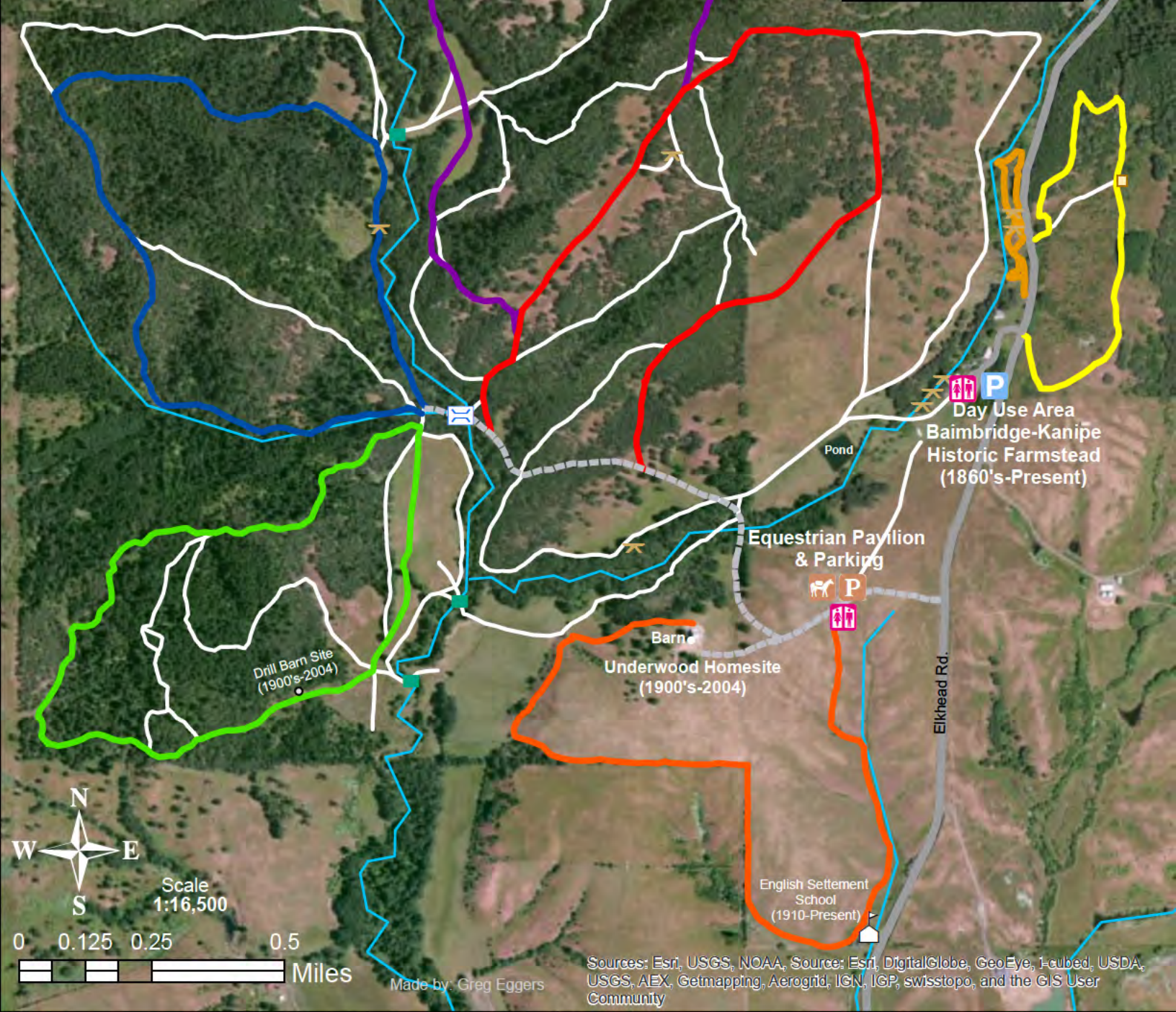
Main Trails

- Oak Savannah (1.61 Mi.)
- Fern Woods (1.63 Mi.)
- Underwood Hill (1.74 Mi.)
- Mildred's Forest (1.68 Mi.)
- School House (1.52 Mi.)
- Ranch View Trail (.86 Mi.)*
- Nature Trail (.48 Mi.)*

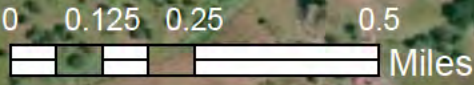
*Foot Traffic Only

Legend

- Side Trail
- Gravel Road
- Stream
- Stream Crossing
-  Bachelor Creek Bridge
-  Picnic Table
-  Bench
-  Restroom
-  Parking



Scale
1:16,500



Made by: Greg Eggers

Sources: Esri, USGS, NOAA, Source: Esri, DigitalGlobe, GeoEye, i-cubed, USDA, USGS, AEX, Getmapping, Aerogrid, IGN, IGP, swisstopo, and the GIS User Community