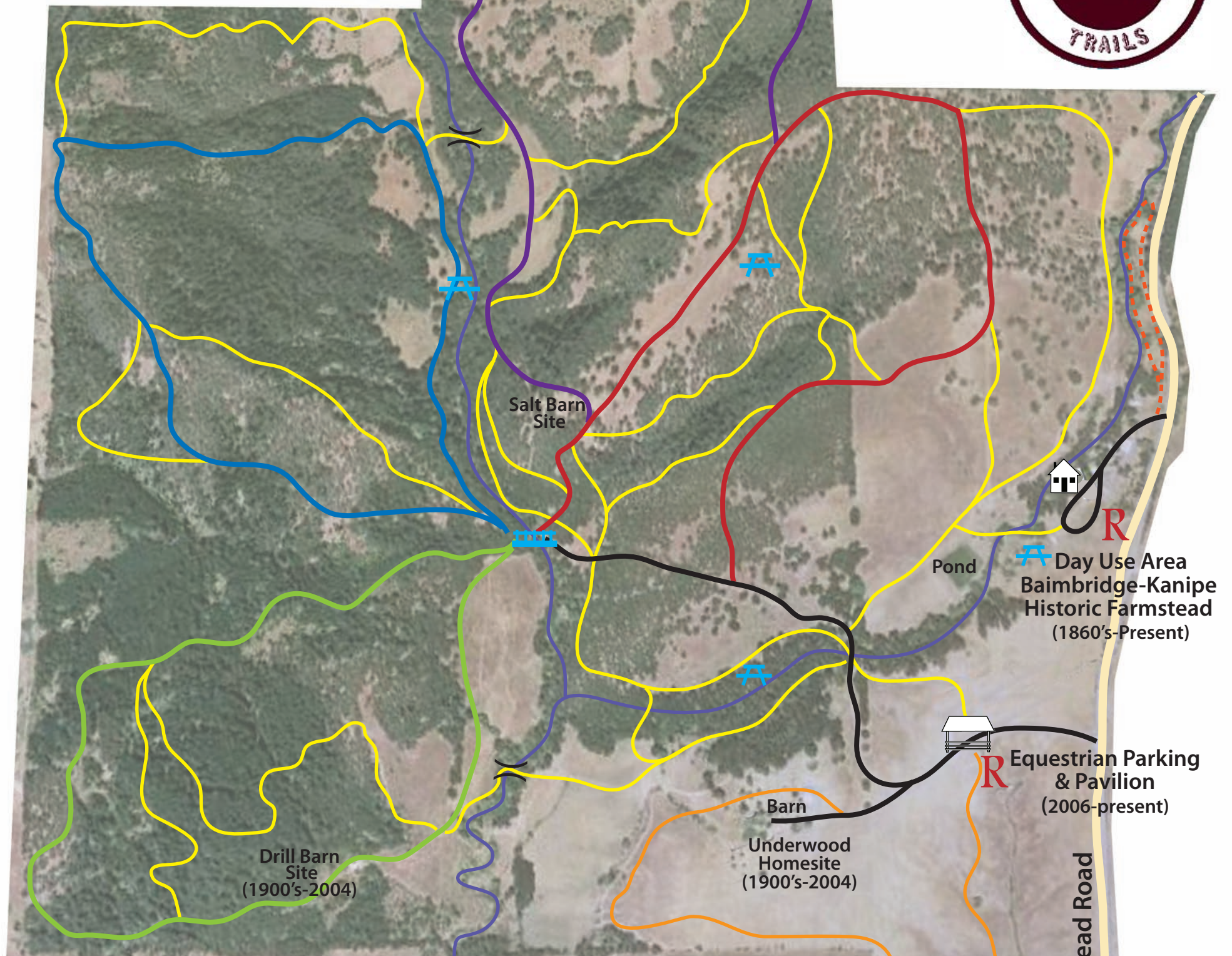


MILDRED KANIPE MEMORIAL PARK



Mildred Kanipe Memorial Park

www.mildredkanipepark.org



Trail Legend

- | | | | |
|--|----------------------------------|--|-----------------------|
| | Purple - Fern Woods | | Roads |
| | Red - Oak Savannah | | Un-named Trails |
| | Orange - School House | | Stream |
| | Green - Mildred's Forest | | Stream Crossing |
| | Blue - Underwood Hill | | Picnic Table |
| | Nature Trail - Foot Traffic Only | | Bachelor Creek Bridge |
| | | | Restrooms |

0 1/2 mi.



Prepared by *Friends of Mildred Kanipe Memorial Park*, in cooperation with *Roseburg Chapter of OET* and *Douglas County Parks*. Spring 2010.